

M-Log can graph data from the **Cloudmaster Irrigation Controller system**. The **Cloudmaster** system uses soil moisture probes to control valves. The data is saved in a separate MDB file for each probe, and **M-Log** reads these files. As **Cloudmaster** adds more data, **M-Log** will automatically read the new data. Each probe connected to the **Cloudmaster** corresponds to an **M-Log** logger.

Installing M-Log

1. Install **M-Log** from CD, or download from <http://www.rsne.com.au/mlog/upgrades.htm>.
 1. Click on **Start**
 2. Choose **Run**
 3. Enter **D:\SETUP.EXE** (or use **<Browse>**)
 4. Follow the setup wizard with **Next, Next**
2. Run **M-Log** from **Start/Menu** or icon.

To view the Cloudmaster sample data

Use **FileMenu/Open** and choose **C:\Mlog\Cloudmaster_Sample.MDB**.

Sample sites and sensors will be shown - click on a sensor to plot the data.

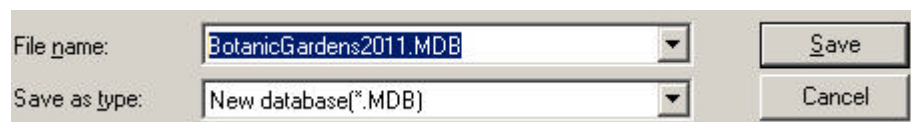
Registration

M-Log can be used for 30 days, but after that time needs registering to allow changes you make to be saved.

1. Use **FileMenu/Registration**
2. Email or fax the **PC Serial number** and you will be sent a password.
3. Enter the password and click **<Activate>**

Create a new database for your data

Use **FileMenu/New/Database** to create a new database for your data. You will be asked to enter a name for the database e.g.



Alternatively, you can add new loggers to an existing **M-Log** database.

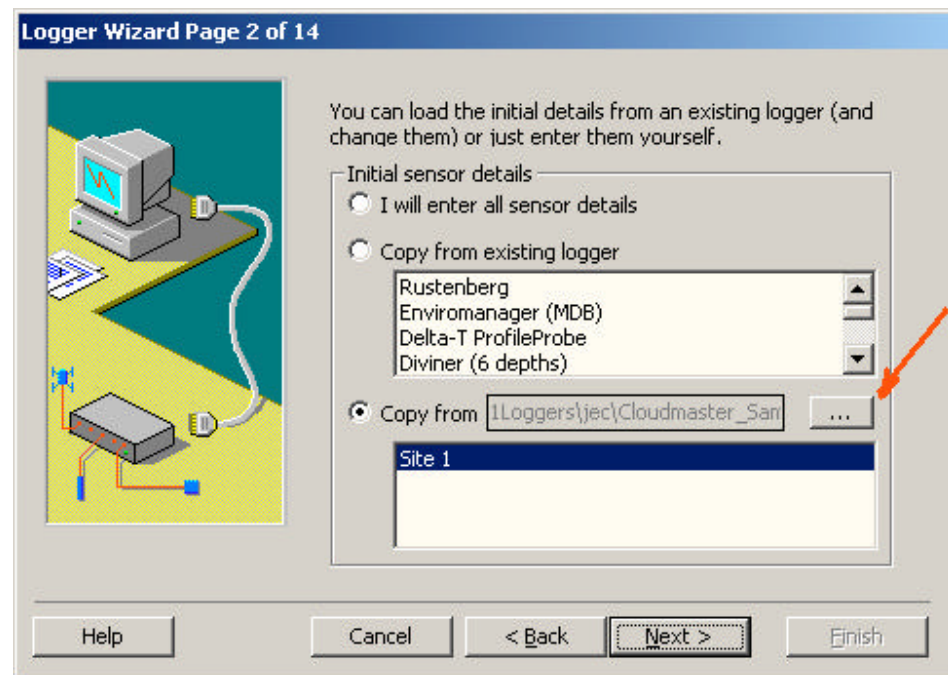
Creating new loggers for each Cloudmaster Control Unit

You need to create a logger for each **Cloudmaster** probe. The **Cloudmaster** system must be installed and working, and you should know the name of the **Cloudmaster** 'working' database - something like...

C:\Cloudmaster\Data\Access\JEC_CM32DB.mdb

Use **FileMenu/New/Logger**, and a wizard will run, allowing you to create new loggers by copying a **template logger**.

- 1) Click **Next** to get to **Page 2 of 14**.
- 2) Use **<..>** and choose **C:\Mlog\Cloudmaster_Sample.MDB** as the template file.
 - 1) Choose a logger to copy e.g. **Probe (10 sensors)**.
 - 2) Choose **Copy from Template**



- 2) Click **Next**, and enter a logger name and number.

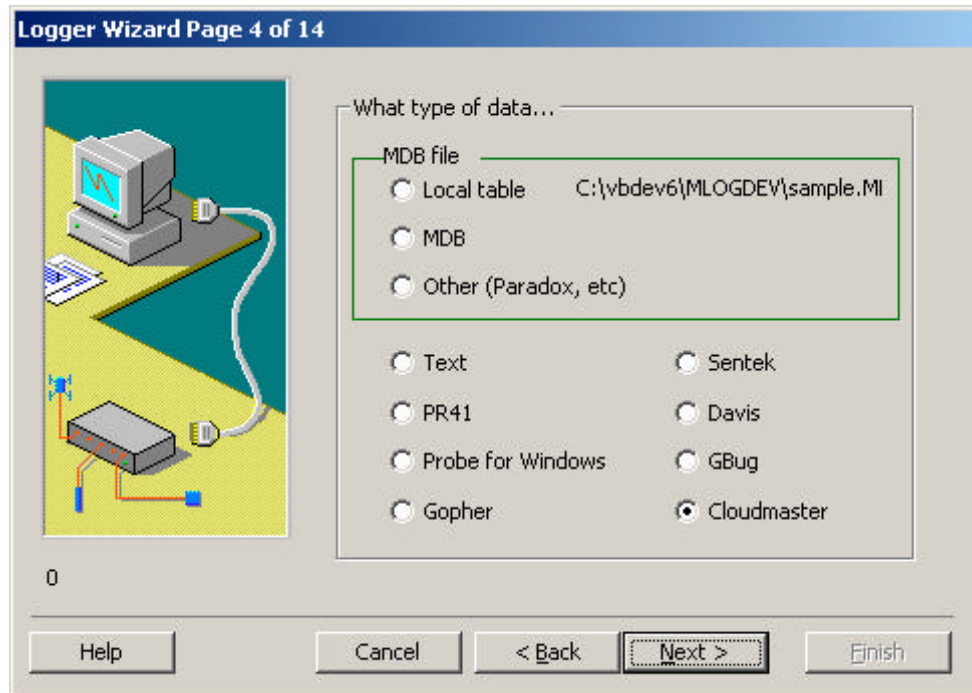
The logger needs a name and number...

Name:

Number:

The name is not important because the **Cloudmaster** names will be copied from the **Cloudmaster** system.

- 3) Click **Next** until you get to **Page 4 of 14** and choose type of data: **Cloudmaster**.

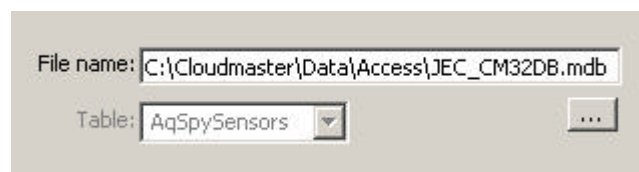


- 3) Click **Next** and confirm that you want **M-Log** to create a logger for each of the probe in the **Cloudmaster** system.



- 4) Locate the **Cloudmaster** 'working database' MDB file - something like

`C:\Cloudmaster\Data\Access\JEC_CM32DB.mdb`



- 4) Click **Next** until you get to the end, and click **Finish**.
You will have created an **M-Log** logger for each **Cloudmaster** probe.

New Probes added to your Cloudmaster system.

If new probes are added to your **Cloudmaster** system, use **FileMenu/New/Logger**, and follow the steps for 'create new logger'. Any new probes found will be added to **M-Log**.

Support

Free telephone, fax and email support for the software is provided for 3 months. After that time you can either take out an annual support contract, or pay a charge for each problem.

Software updates and other files for downloading are at...

<http://www.rsne.com.au/mlog/upgrades.htm>

Cloudmaster

PO Box 131 Camperdown, NSW, 2050

T: +61 0427100378

E: sales@cloudmaster.com.au

W: www.cloudmaster.com.au

Research Services New England

8/16 Nicholson Street, Balmain, NSW 2041, Australia

T: +61 (2) 9810 3563

F: +61 (2) 9810 3323

E: support@rsne.com.au

W: www.rsne.com.au